

# EMPRESS

## THE DUTCH POWERHOUSE



### TECHNICAL DATASHEET

#### Light output

##### Wide Beam

Light spectra	Optical properties*			Spectral specifications*				Imparted heat	
	PhotonFlux (μmol/s)**	Consumed Power (W)	Efficacy (μmol/J)	blue 400-500	mid 500-600	red 600-700	far-red >700	W	BTU/hr
Low Blue	2250	650	3,5	4,2	0,2	95,5	0,1	200	682
Medium Blue	2243	660	3,4	8,4	0,2	91,2	0,2	205	699
Broad Spectrum	1800	665	2,7	6,4	22,1	70	1,5	285	972
Low Blue + White	2187	665	3,3	4,8	4,8	90,1	0,3	225	767
Medium Blue + White	2140	665	3,2	9	4,8	85,8	0,4	225	767

Other spectrum variations on request.

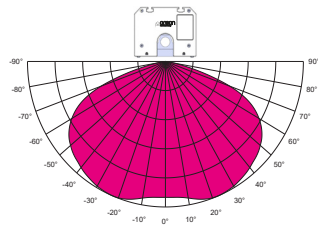
\* Electrical and optical properties have a tolerance of ± 5%.

\*\* Output is defined as the total photon flux between 400-800nm

Typical values for stable operation at 77°F | 25°C cooling water temperature

#### Light distribution

##### Wide Beam



### Product features

Housing material and finishing	Aluminium (IK10). Anodized / antifouling powder coating RAL 9010 (dirt repellent)
LED protection cover	High transmission glass (transmission >98%) (IK07)
Beam angle	Wide Beam: 140°
Ingress Protection LED compartment	IP67 (dust- and watertight). Fixtures can be cleaned by using pressurized water, the complete electrical circuit is sealed waterproof.
Lifespan and warranty	L90 B05 - 50,000 hours, 5 year full warranty

### Technical data

Power factor	> 0.96 @ 400 VAC
Total Harmonic Distortion (THD)	< 11%
Voltage range	200 - 480 VAC
Current range	3.5 - 1.5 A
Frequency range	50/60 Hz
Inrush current	max. 40A (t< 1 msec)
Leakage current	< 0.75 mA @ 480 VAC
Isolation class	Class I
Connector	Integrated: 3 pole connector Male (Wieland RST20i3 black)
Operation conditions	32 to 113°F   0 to 45°C / 95% RH
Storage conditions	32 to 140°F   0 to 60°C / 85% RH

### Cooling liquid and circuit

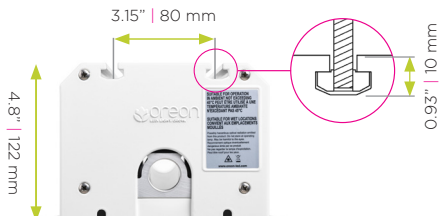
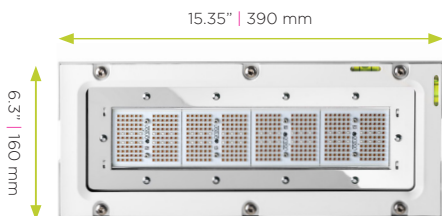
Cooling liquid	Water (pH 4-8)
Cooling liquid temperature	From dew point to 113°F   45°C
Cooling liquid flow rate	> 21 l/min
Water connection	Pipe thread ISO 228-G 3/4" (2x)

### Mounting

Fixture mounting interface 4x M6 T-nut (maximum depth for the bolt is 3/8 inch | 10 mm). Four T-nuts are included in the delivery.

### Weight and dimensions

Nett weight	19.0 lb   8,6 kg
Gross weight (approx.)	22.7 lb   10,3 kg (including mounting brackets, connectors, pipes)
Product dimensions (L x W x H)	15.35" x 6.3" x 4.8"   390 mm x 160 mm x 122 mm
Carton dimensions (L x W x H)	21.65" x 8.66" x 6.89"   550 mm x 220 mm x 175 mm



### Logistic specifications

Quantity per pallet	49 pcs.
Gross weight per pallet	1069.2 lb   485 kg
Pallet dimensions (EUR)	31.5" x 47.24" x 56.69"

HS-code

### Air freight

Quantity per pallet	49 pcs.
Gross weight per pallet	1069.2 lb   485 kg
Pallet dimensions (EUR)	31.5" x 47.24" x 56.69"
HS-code	9405 4099 90

### Sea/Road freight

Quantity per pallet	63 pcs.
Gross weight per pallet	1358 lb   616 kg
Pallet dimensions (EUR)	31.5" x 47.24" x 71.26"
HS-code	9405 4099 90

### Compliance

CE  
cMETus listed (ANSI/UL+CSA)

LVD 2014/35/EU | EMC 2014/30/EU | RoHS 2011/65/EU  
UL 1598 | CSA C22.2 No. 250.0-08



V210125E

### Oreon

Lorentzlaan 6  
3401 MX IJsselstein  
The Netherlands

T +31 30 760 0660  
E info@oreon-led.com  
W www.oreon-led.com

